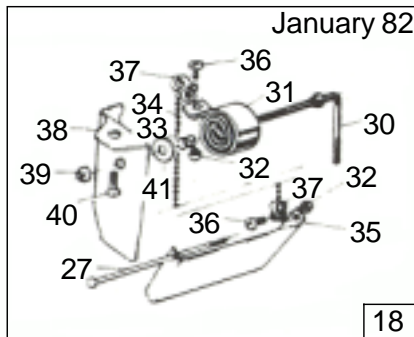
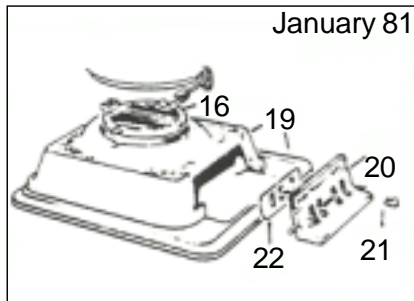
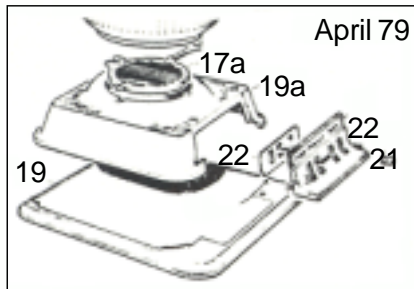


# Masport®

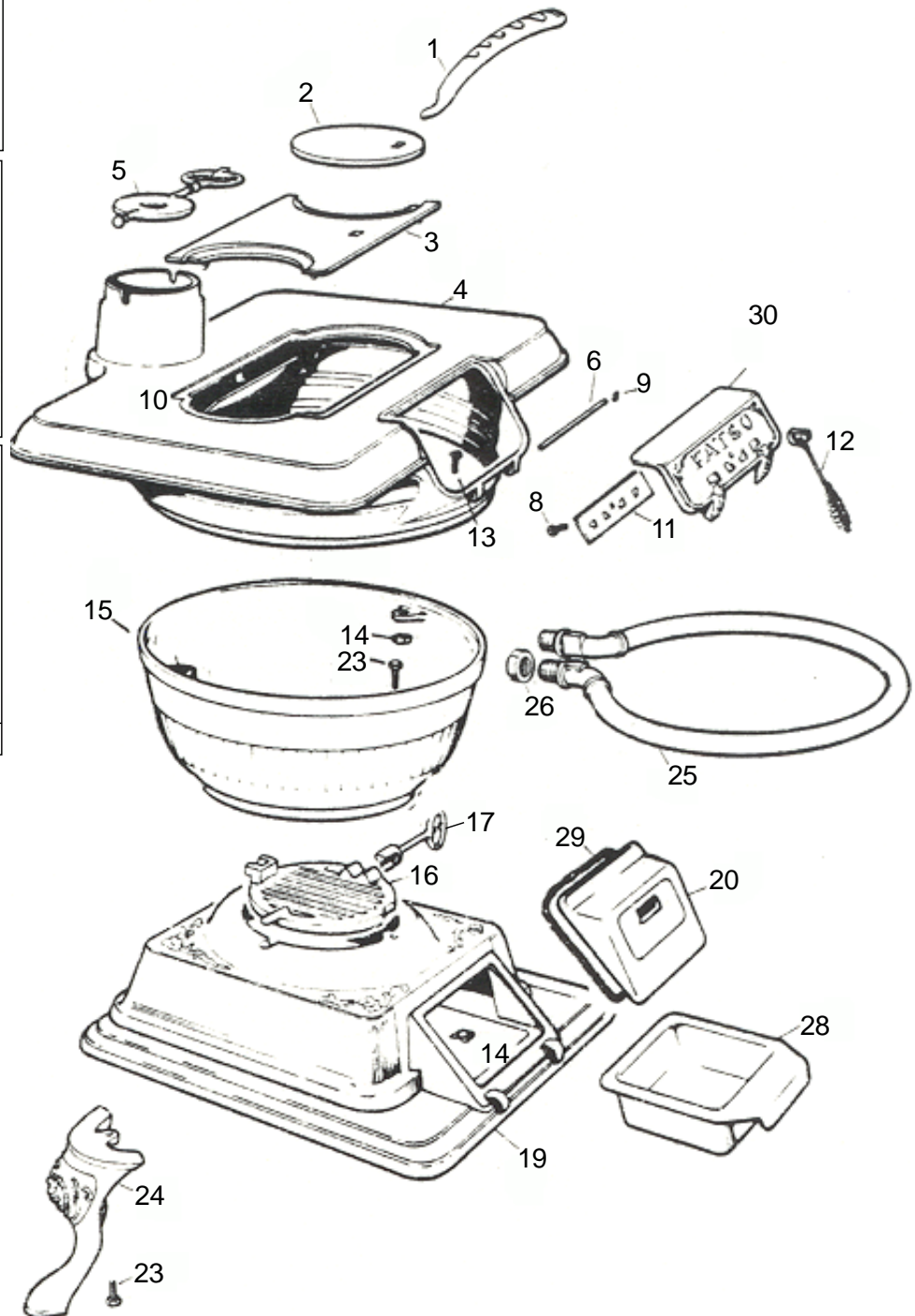
## FATSO

Part Number 984922





THERMOSTAT

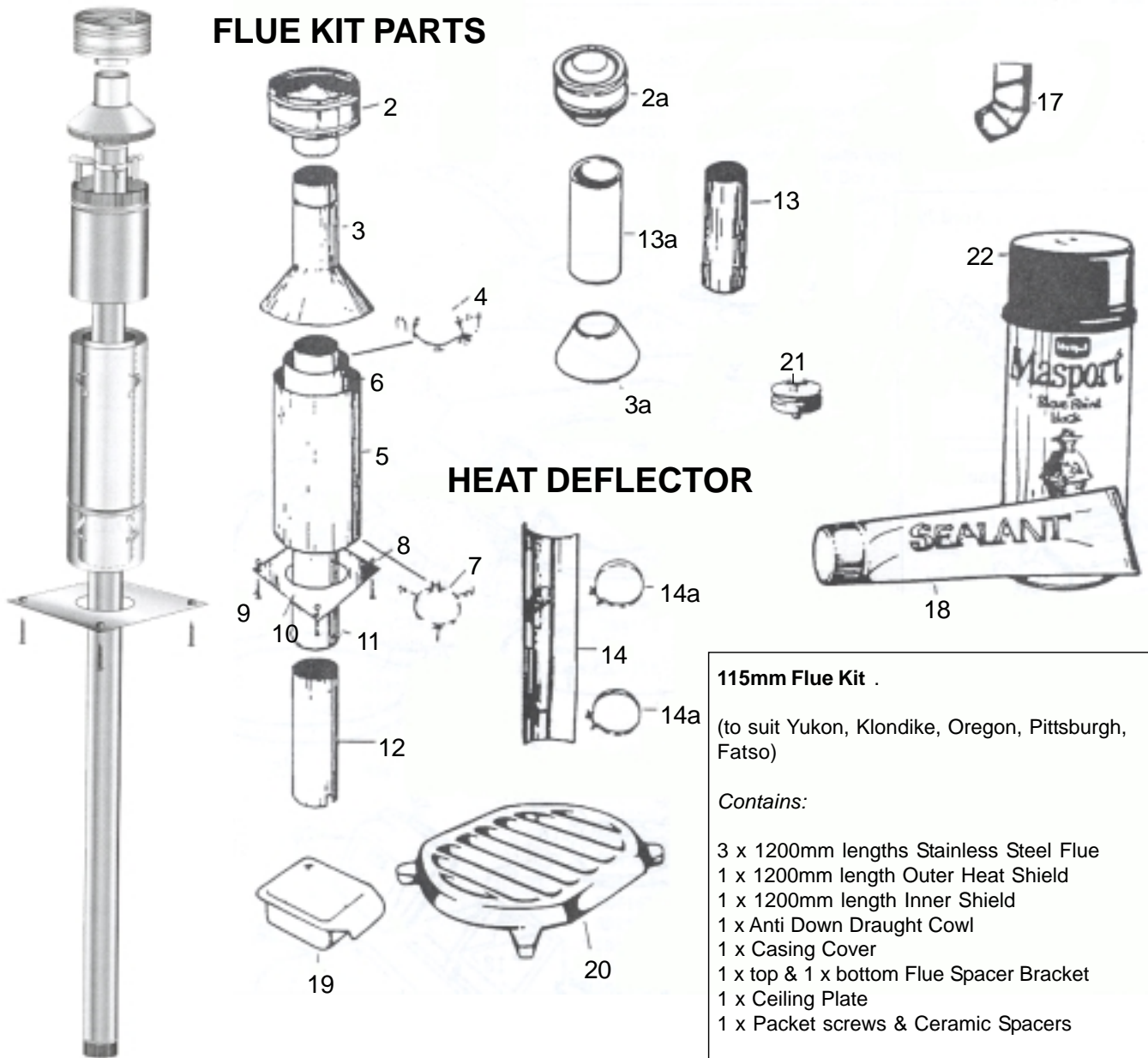




Item No's	Part No's Nov 2000	Description	Qty
1	984022	Handle	1
2	984102	Plate, Hot 155min Dia	2
3	984103	Plate, Hot - H Shape	1
4	984117	Chamber, Top (with lugs)	1
4a	984108	Chamber, Top & Door (without lugs) (Obsolete)	1
5	984095	Damper (external flue) - 115mm	1
5a	984001	Damper (internal flue) - 100mm	1
6	984109	Pin, Hinge	1
7	984153	Door, Top - Fatso	1
8	501959	Screw, Set M6 x 12	1
9	500848	Washer, 3/16"	2
10	984114	Baffle - Fatso	1
11	984105	Plate, Top Draught (Obsolete)	1
12	984115	Knob Assembly	1
13	501598	Screw, M8 x 25	2
14	501602	Nut, M8	2
15	984047	Belly, Bottom (with lugs) - drilled for water coil	1
15a	984088	Belly, Bottom (without lugs - drilled for water Coil)	1
16	984086	Grate	1
17	984405	Handle - Grate	1
17a	984012	Handle & Grate (1 Unit)	1
18	984168	Control, Steadiheat Assembly (complete)	1
19	984152	Pan, Ash	1
20	984151	Door, Bottom	1
21	984013	Knob (Obsolete)	1
22	984011	Plate, Bottom Draught (Obsolete)	1
23	501598	Screw, Set M8 x 25	6
24	984015	Leg	4
25	984242	Coil, Water Asembly - 25mm Dia (Incl. 26)	1
26	584065	Nut, Backing 25mm BSP (Obsolete)	2
27	584162	Pin, Flap Hinge	1
28	984066	Box, Ash - Large	1
29	984169	Seal, Fibre (Obsolete)	1
30	984164	Lever, Thermostat (Obsolete)	1
31	584167	Coil, Damper Control (Obsolete)	1
32	502168	Nut, M4	3
33	584159	Spring, Coil Tension (Obsolete)	1
34	584166	Chain, 44min Long (Obsolete)	1
35	984160	Flap, Damper	1
36	502167	Screw, M4 x 6 (Obsolete)	2
37	502124	Attachment, Ball Chain (Obsolete)	2
38	984163	Bracket (Obsolete)	1
39	502125	Nut, Locking M5	1
40	501662	Screw, M6 x 12 (Obsolete)	1
41	500848	Washer, 3/16"	1
<b>NOTILLUSTRATED</b>			
	584154	Operating Instructions	1
	585858	Installation Instructions	1
	984090	Plug Assembly	1
<b>NOTE:</b>		Replacement doors are not drilled at factory - but must be drilled & fitted by dealer or owner	



## FLUE KIT PARTS



## HEAT DEFLECTOR

### 115mm Flue Kit .

(to suit Yukon, Klondike, Oregon, Pittsburgh, Fatso)

*Contains:*

- 3 x 1200mm lengths Stainless Steel Flue
- 1 x 1200mm length Outer Heat Shield
- 1 x 1200mm length Inner Shield
- 1 x Anti Down Draught Cowl
- 1 x Casing Cover
- 1 x top & 1 x bottom Flue Spacer Bracket
- 1 x Ceiling Plate
- 1 x Packet screws & Ceramic Spacers

**Note:** Flue Reflector is required for standard installations

**Part No:  
984948**

Item No	Part No	Description	Qty	Item No	Part No	Description	Qty
2	584020	Raincap	1	13	584463	Shield, Weather (Intro, Apr '84)	1
2a	984126	Raincap (Intro April '84) - 120mm	1	14	584055	Kit, Heat Deflector	1
3	584017	Cone, Flashing	1	14a	584052	Band, Mounting	2
3a	584462	Cone, Flashing (Intro April '84)	1	17	584071	Elbow, Flue - Adjustable	1
4	584040	Spider	1	18	584048	Sealant	1
5	584023	Shield, Heat - 246mm	1	19	984066	Box, Ash - Large	1
6	584031	Baffle - 180mm	1	19a	984226	Box, Ash - Small	1
7	584018	Bracket, Centralising	1	20	984079	Grate, Drop in - Large - 190mm	1
8	984132	Ceiling Kit wFasteners	4	20a	984225	Grate, Drop in - Large - 150mm	1
9	501597	Screw	4	21	984090	Plug Assembly - 34mm Dia	1
10	584016	Plate, Ceiling	1	21a	984229	Plug Assembly - 27mm Dia	1
11	584025	Section, Flue (Swaged)	2	22	584047	Paint, Maspon Stove - Black	1
12	584024	Section, Flue (Notched)	1				